

Springfield, MA

Watershed Studies

Cobble Mt. Dam

- View looking toward Little River



6 Aug 04



6 Aug 04



6 Aug 04



6 Aug 04



6 Aug 04

- Birch Meadow

6 Aug 04

A person wearing a light blue short-sleeved shirt and dark jeans is seen from the back, standing in a meadow. The meadow is filled with dense green vegetation, including various grasses and leafy plants. In the foreground, there is a large pile of fallen, light-colored branches and twigs. To the right, a body of water is visible, reflecting the sky and the surrounding greenery. The overall scene is a natural, outdoor setting.

- Birch Meadow

6 Aug 04



- Birch Meadow

6 Aug 04



- Birch Meadow

6 Aug 04

Falls Brook

- Receding Beaver Pond



6 Aug 04

Falls Brook

- Beaver Pond



6 Aug 04

Falls Brook

- Beaver Pond



6 Aug 04

Falls Brook

- Beaver pond
 - With lodge



6 Aug 04

Falls Brook

- Beaver Dam
 - Water spilling over



6 Aug 04

Falls Brook

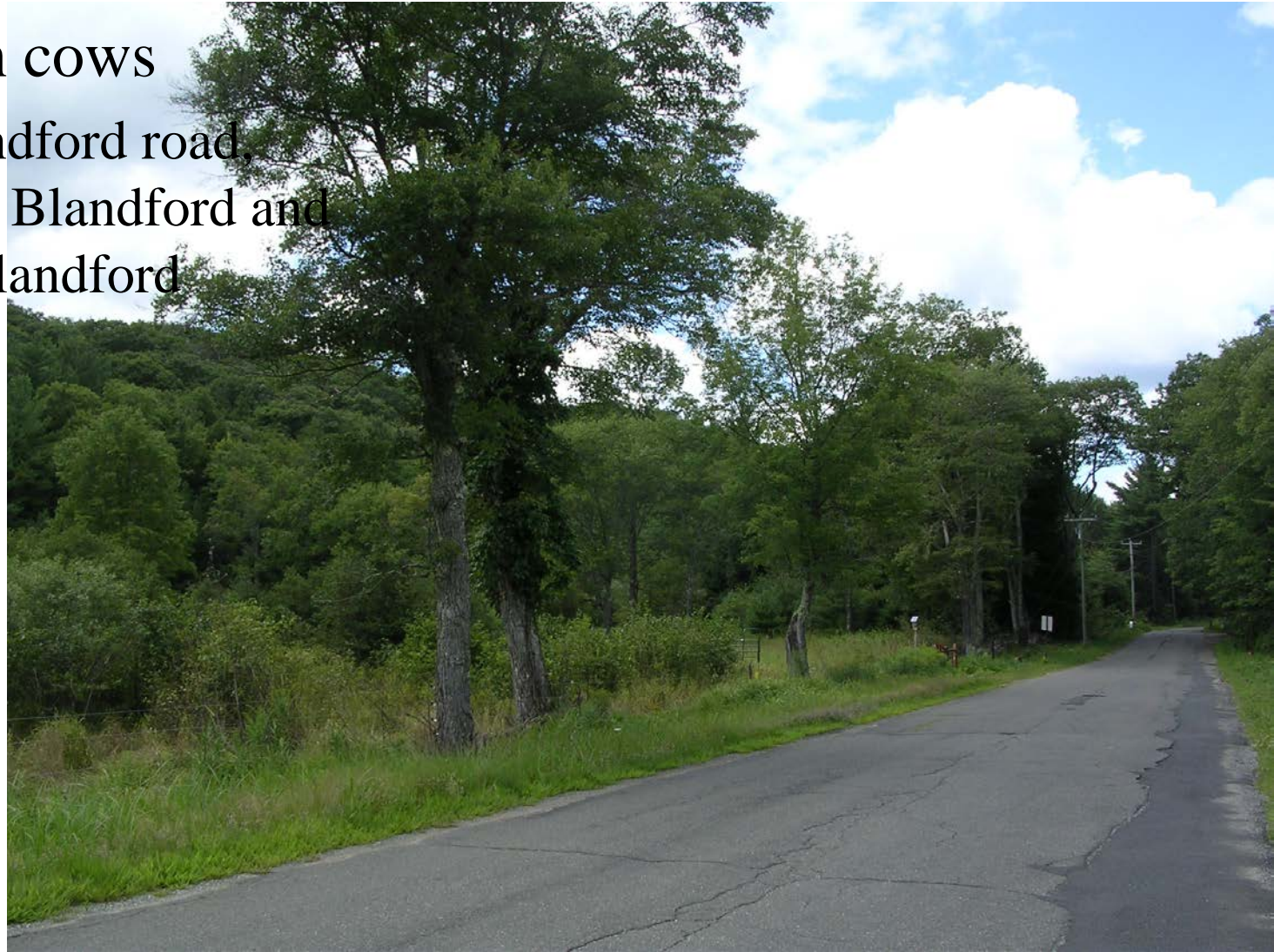
- Beaver Pond



6 Aug 04

Bedlam Brook Basin

- Farm with cows
 - Off Blandford road,
between Blandford and
North Blandford

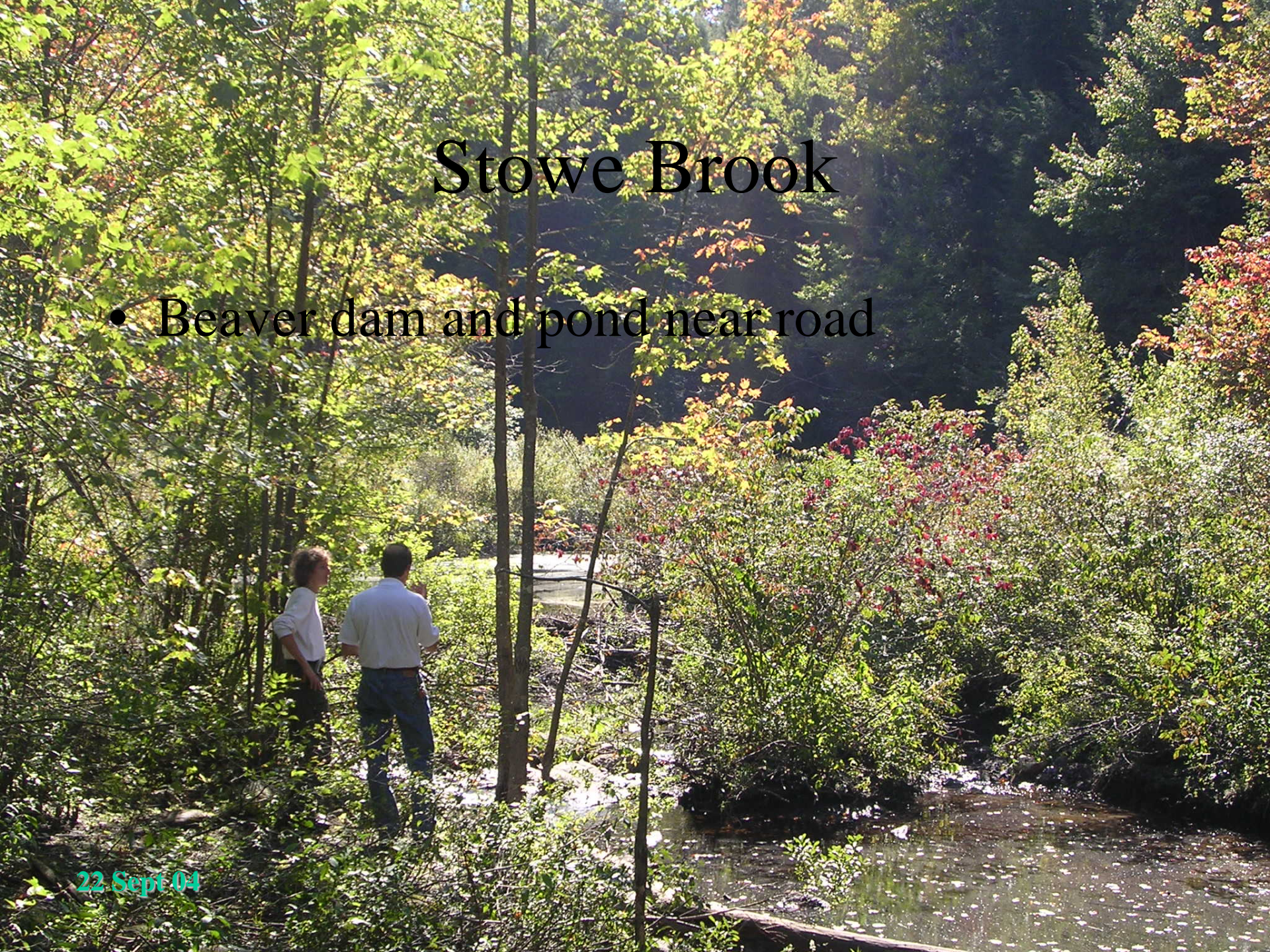


6 Aug 04

Stowe Brook

- Beaver dam and pond near road

22 Sept 04



Stowe Brook

- View of beaver dam

22 Sept 04

Stowe Brook

- Evidence of beaver activity next to brook
 - Near road

22 Sept 04

Stowe Brook

22 Sept 04



Stowe Brook

22 Sept 04

Stowe Brook



22 Sept 04

Stowe Brook

- Bridge looking north into Cobble Mt. Reservoir
 - Small beaver dam at upstream opening

22 Sept 04



Exit Brook

- No beaver activity
 - Control for Stowe Brook?

22 Sept 04

Exit Brook

- Boning collecting sample

22 Sept 04



Exit Brook

22 Sept 04



Exit Brook

- View of bridge from road

22 Sept 04

Phelon Brook

A photograph of a small stream, Phelon Brook, flowing over rocks in a forest. The water is clear and reflects the surrounding greenery. A small waterfall is visible in the background.

22 Sept 04

Phelon Brook

- Boning and Ralph

22 Sept 04



Phelon Brook

A photograph of a forest stream, identified as Phelon Brook. The stream flows through a dense forest, with water reflecting the surrounding trees and sky. The banks are rocky and covered in moss. Sunlight filters through the trees, creating dappled light on the water and forest floor. The overall scene is serene and natural.

22 Sept 04

Alder Brook

- Looking north into Borden Brook Reservoir

22 Sept 04

Alder Brook

Borden Brook Reservoir

22 Sept 04

Alder Brook

- Boning collecting sample
- Dana watching

22 Sept 04

Bordon Brook Reservoir

- From the mouth
of Alder Brook

22 Sept 04

Ripley Brook

- Leaving sampling site

22 Sept 04

Ripley Brook

- Ralph Tarnauskas collecting sample

22 Sept 04

Ripley Brook



22 Sept 04

Ripley Brook



22 Sept 04

Ripley Brook

22 Sept 04

Pond Brook

- One of the major tribs
- Looking upstream from just south of the road

22 Sept 04

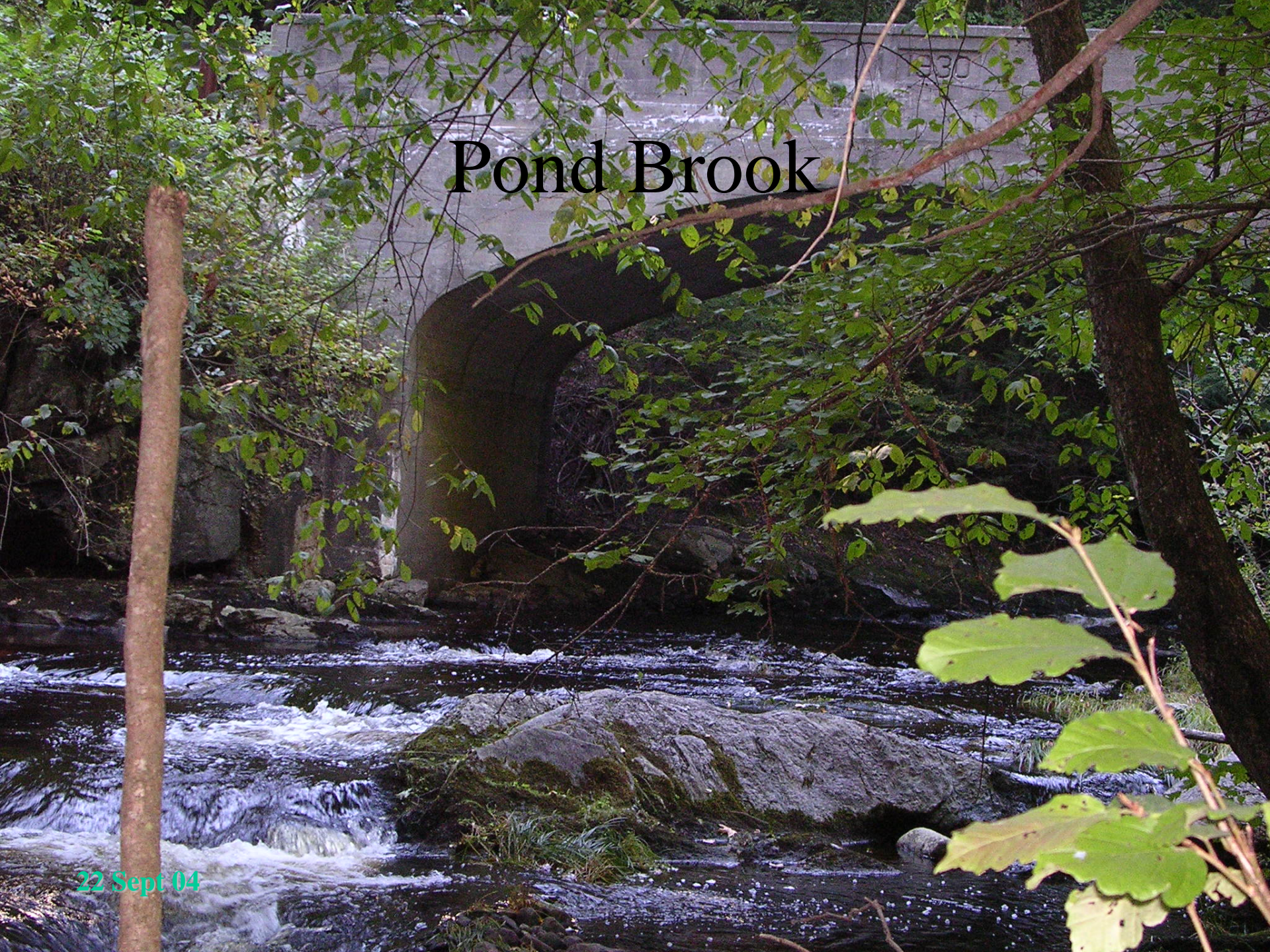
Pond Brook



22 Sept 04

Pond Brook

22 Sept 04



Peebles Brook



22 Sept 04

Peebles Brook

- Boning collecting sample

22 Sept 04